



PEARL C/W RAILS
PARAPLEGIC SEMI CLOSE COUPLED
SUITE

730103WH
CPEPSRSI2C00349
6005826061109

Raised LL pan with 6L bottom inlet cistern with purpose made CP side flush lever, purpose made thermoset seat with cover plate, rear and side grab rails.

OPTIONAL ITEMS

- 1. 8513Z000**
Fixing screws

SPARES FOR PRODUCT

- 1. 750202WH**
Protea paraplegic pan

- 2. 7300LPWH**
Pearl cistern

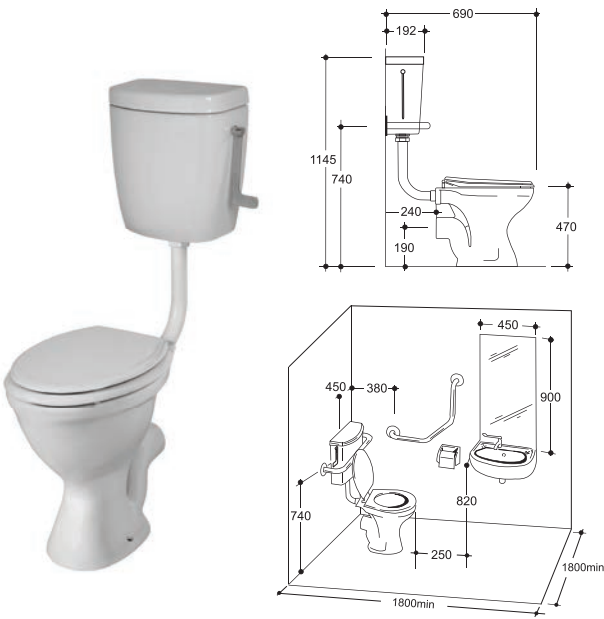
- 3. 7300Z000**
Pearl seat

- 4. 8939Z000**
Side grab rail

- 5. 8940Z000**
Cistern grab rail

INSTALLATION INSTRUCTIONS

1. Install pan 750mm from the wall to the front rim. Place pan into position and mark hole positions. Remove pan and drill holes. Place pan back into position, fix screw to the floor and secure.
2. Assemble all cistern fittings, then fit cistern 545mm from bottom of cistern to floor.
3. Install seat and cut connector plate to size, then install.
4. Flush the water line.
5. Complete all plumbing connections to suite and test flush. Ensure that correct water level has been set and that operating overflow tube height conforms to and operates to local by laws and SABS specification. Detailed installation instructions supplied with the suite.
6. Always use silicone sealant or equivalent between the pan and the finished floor and wall surfaces for a secure and neat installation.
NOTE: The warranty will not apply to any product installed with cement.



PROTEA PARAPLEGIC
PARAPLEGIC LOW LEVEL SUITE

750246WH
CPROPPSI2C00349B
6005826064490

Raised LL pan with 6L bottom inlet cistern with purpose made CP side flush lever.

OPTIONAL ITEMS

- 1. 8515Z100**
Buxton Sta-tite seat

- 2. 8513Z000**
Fixing screws

SPARES FOR PRODUCT

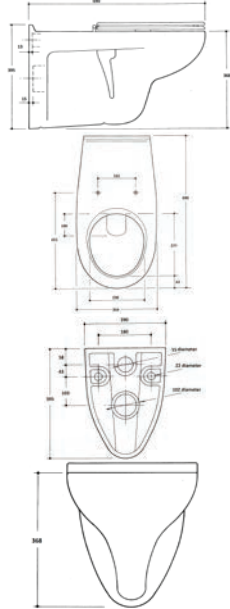
- 1. 750202WH**
Protea Paraplegic Pan

- 2. 7116LPWH**
Hibiscus Elite Paraplegic cistern

INSTALLATION INSTRUCTIONS

1. Assemble all cistern fittings with inlet valve on right hand side of cistern. Fix cistern to finished wall surface in line with pan position.
2. Place pan into position and mark hole positions. Remove pan and drill holes. Place pan back into position, fix screw to the floor and secure.
3. Flush the water line.
4. Complete all plumbing connections and test flush. Ensure that correct water level has been set and that operating overflow tube height conforms to and operates according to local by-laws and SABS specifications.
5. Always use silicone sealant or equivalent between the pan and the finished floor and wall surfaces for a secure and neat installation.
NOTE: The warranty will not apply to any product installed with cement.





**ORCHID PARAPLEGIC
WALL HUNG PAN**

439016WH
CORBA0NN-2CO
6005826064292

Back inlet open rim pan compatible with back inlet exposed flush valve and concealed cistern with remote actuator plate. Designed to flush on 6L.

OPTIONAL ITEMS
1. 8945Z000
Single Flap Sta-tite seat

2. 8515Z100
Buxton Sta-tite seat

INSTALLATION INSTRUCTIONS

1. Extend wall behind pan by 115 mm, and 490 mm above finished floor surface.

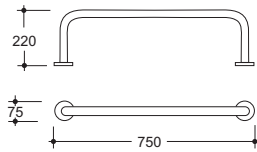
2. Determine pan height, prepare water inlet and outlet heights, and adjust threaded rods to height of pan fixing holes. Detailed installation instructions supplied with the bracket.

3. Fit floor bracket into recessed wall and floor, then complete brickwork.

4. Place pan into position, tighten nuts and place c.p. dome cover over nuts.

5. Complete plumbing and flush the water line.

6. Flush test to ensure that all connections are watertight.
NOTE: Do not over tighten.

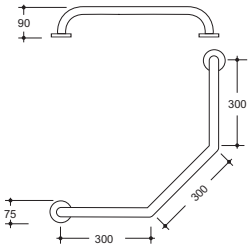


**PROTEA PARAPLEGIC
GRAB RAIL**

8942Z000
MZ006626
8942Z000 6005826061055

750mm x 220mm x 32mm

**OPTIONAL ITEMS
N/A**

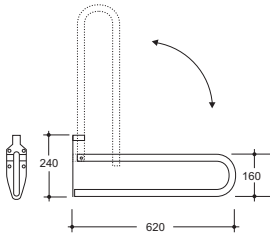


**SIDE WALL
GRAB RAIL**

8939Z000
MZ005742
8939Z000 6005826061024

300mm x 300mm x 32mm

**OPTIONAL ITEMS
N/A**

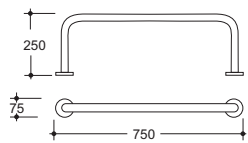


**DROP DOWN SUPPORT
GRAB RAIL**

8943Z000
MZ006627
8943Z000 6005826061062

650mm x 160mm x 25mm

**OPTIONAL ITEMS
N/A**

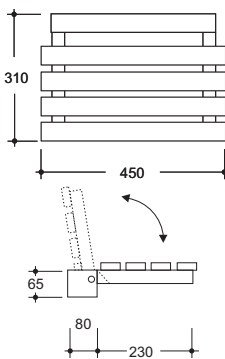


**PEARL PARAPLEGIC GRAB RAIL
GRAB RAIL**

8940Z000
MZ005743
8940Z000 6005826061031

750mm x 250mm x 32mm

**OPTIONAL ITEMS
N/A**

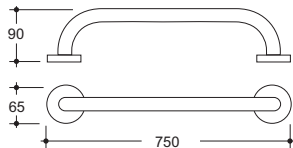


SHOWER SEAT

8944Z000
MZ006628
8944Z000 6005826061079

450mm x 310mm x 65mm

**OPTIONAL ITEMS
N/A**



**WALL HUNG PAN GRAB RAIL
GRAB RAIL**

8941Z000
MZ005744
8941Z000 6005826061048

750mm x 90mm x 32mm

**OPTIONAL ITEMS
N/A**

